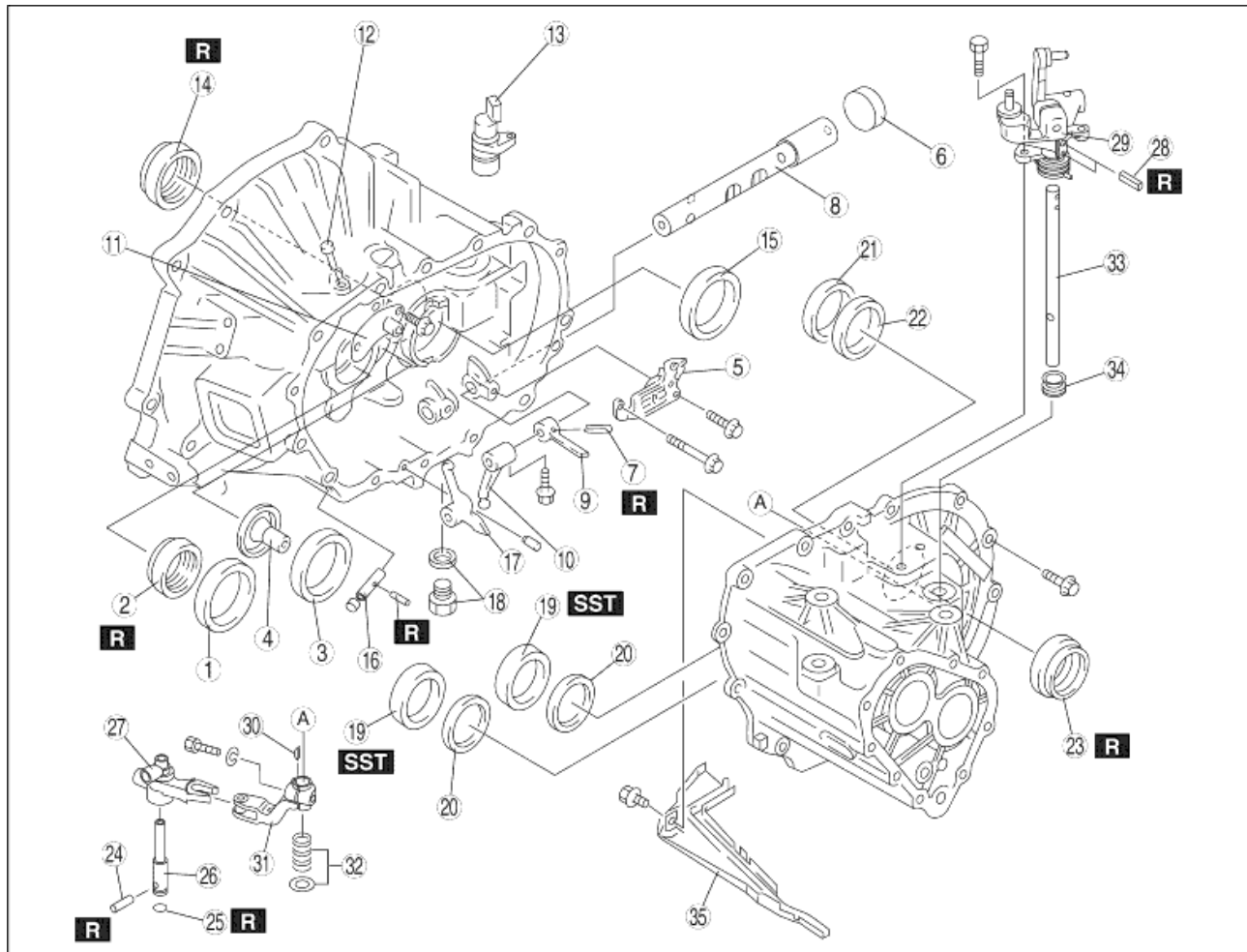


CLUTCH HOUSING AND TRANSAXLE CASE COMPONENTS DISASSEMBLY

A6E511217010M01

1. Disassemble in the order shown in the figure.



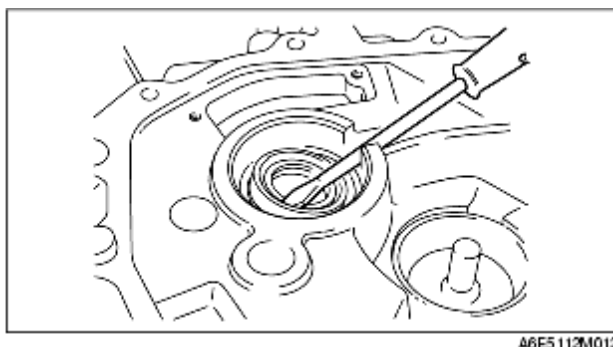
A6E5112M113

1	Bearing race (primary shaft)
2	Oil seal (primary shaft) (See Oil Seal (Primary Shaft) Disassembly Note)
3	Bearing race (secondary shaft) (See Bearing Race (Secondary Shaft) Disassembly Note)
4	Funnel
5	Guide plate component
6	Sealing cap
7	Roll pin (See Roll Pin Disassembly Note)
8	Control rod (See Control Rod Disassembly Note)
9	Selector
10	Change arm
11	Bleather cover component

12	Bleather
13	Hole cover
14	Oil seal (differential) (See Oil Seal (Differential) Disassembly Note)
15	Bearing race (differential) (See Bearing Race (Differential) Disassembly Note)
16	Reverse lever shaft
17	Reverse lever
18	Drain plug and washer
19	Bearing race (transaxle case) (See Bearing Race (Transaxle Case) Disassembly Note)
20	Adjustment shim(s)
21	Bearing race (differential) (See Bearing Race (Differential) Disassembly Note)
22	Adjustment shim(s)
23	Oil seal (differential) (See Oil Seal (Differential) Disassembly Note)
24	Dowel pin
25	O-ring
26	Crank lever shaft
27	Clank component lever
28	Roll pin
29	Shift lever component
30	Key
31	Control end
32	Spring and washer
33	shift lever shaft
34	Boots
35	Oil passage

Oil Seal (Primary Shaft) Disassembly Note

1. Remove the oil seal using screwdriver.

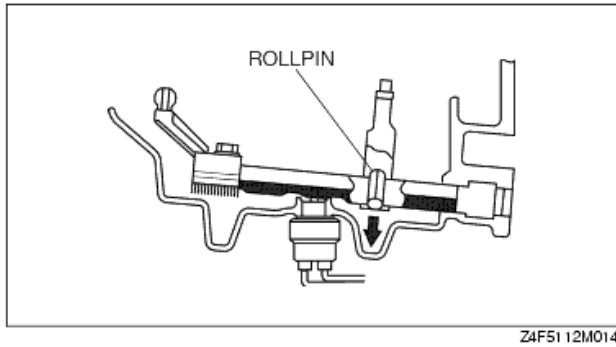


Bearing Race (Secondary Shaft) Disassembly Note

1. Remove the bearing race by lifting it and the funnel out together.

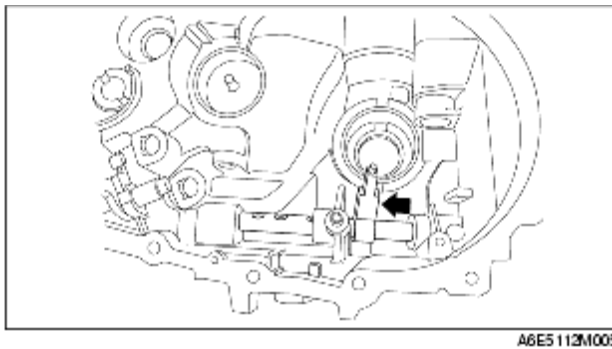
Roll Pin Disassembly Note

1. Align the groove for removal of the clutch housing pin with the position of the roll pin, then tap the pin out using a pin punch.

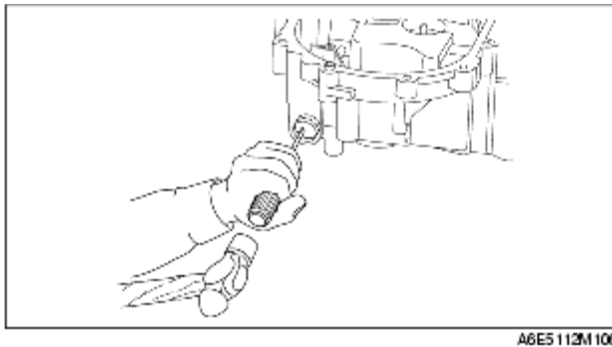


Control Rod Disassembly Note

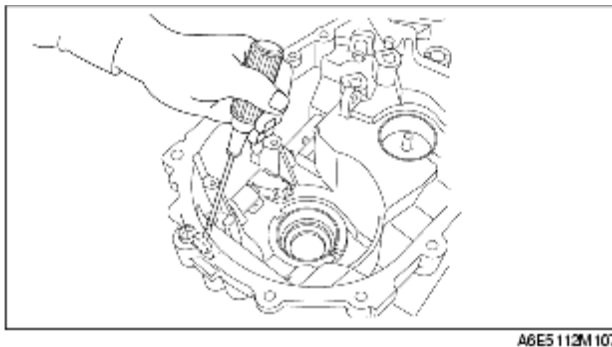
1. Move the control rod in the direction of arrow.



2. Using a flathead screwdriver and hammer, make a hole on the cap.

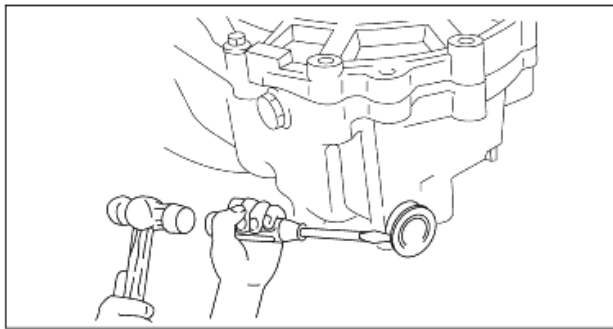


3. Pthe seal cap off, putting the flathead screwdriver into the hole, made in Step 2, from the inside of the transmission.



Oil Seal (Change Rod Component) Disassembly Note

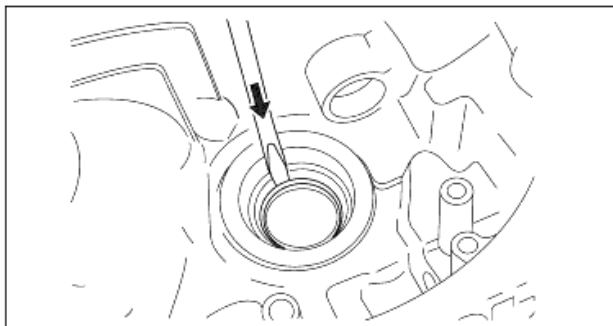
1. Remove the oil seal using the screwdriver.



A6E51 12M015

Oil Seal (Differential) Disassembly Note

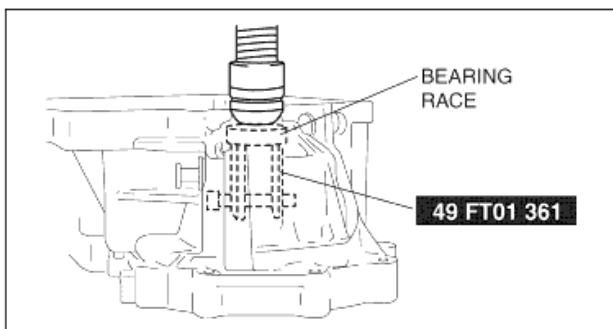
1. Remove the oil seal using the screwdriver.



A6E51 12M016

Bearing Race (Differential) Disassembly Note

1. Remove the bearing outer race using the SST.

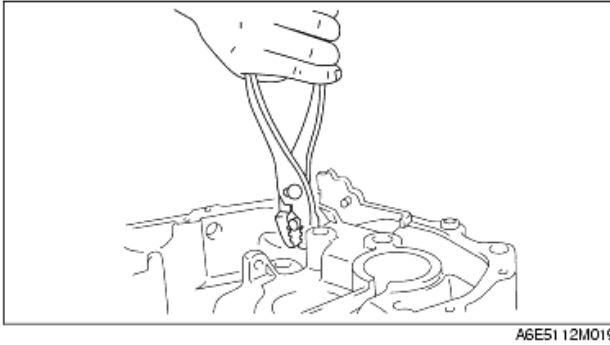


Z4F51 12M017

Reverse Lever Shaft Disassembly Note

1. Remove the roll pin using pliers.

2. Protect the reverse lever shaft with a rag and use pliers to remove the shaft.



Bearing Race (Transaxle Case) Disassembly Note

1. Remove the bearing race using the SST.

